

Final Report

Envisioning Sustainable Futures Together Springboard

June 2021



Mariana Fonseca Braga

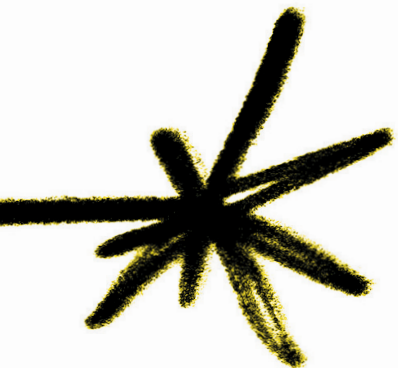
mfbraga@lancaster.ac.uk

Rosendy Galabo

r.galabo@lancaster.ac.uk

Rupert Griffiths

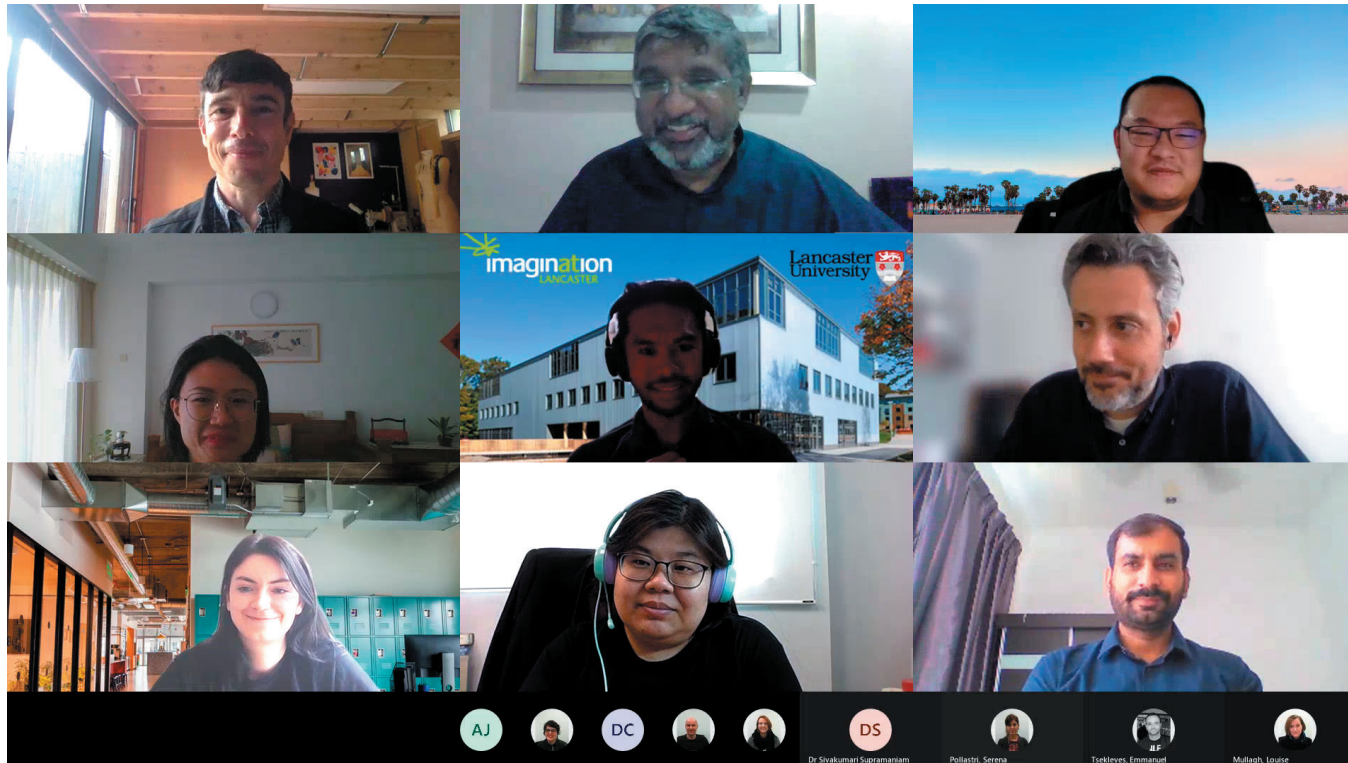
rupert.griffiths@lancaster.ac.uk



Contents

Introduction	1
Participants	2
Springboard Programme	3
Workshops	4
Final considerations	7
Acknowledgements	8
Appendix 1 - Bios	9

Introduction



The Envisioning Sustainable Futures Together Springboard was a programme of three one-hour online workshops, running over three days in early June 2021. Its aims were to contribute to building the research community amongst Sunway University and Beyond Imagination (BI) at Lancaster University and to create opportunities for future research collaborations between BI and Sunway University. Microsoft Teams was the main platform utilised to conduct the activities considering the accessibility by both institutions and the intention to create a shared space where the teams can continue sharing and further developing research collaborations.

Participants

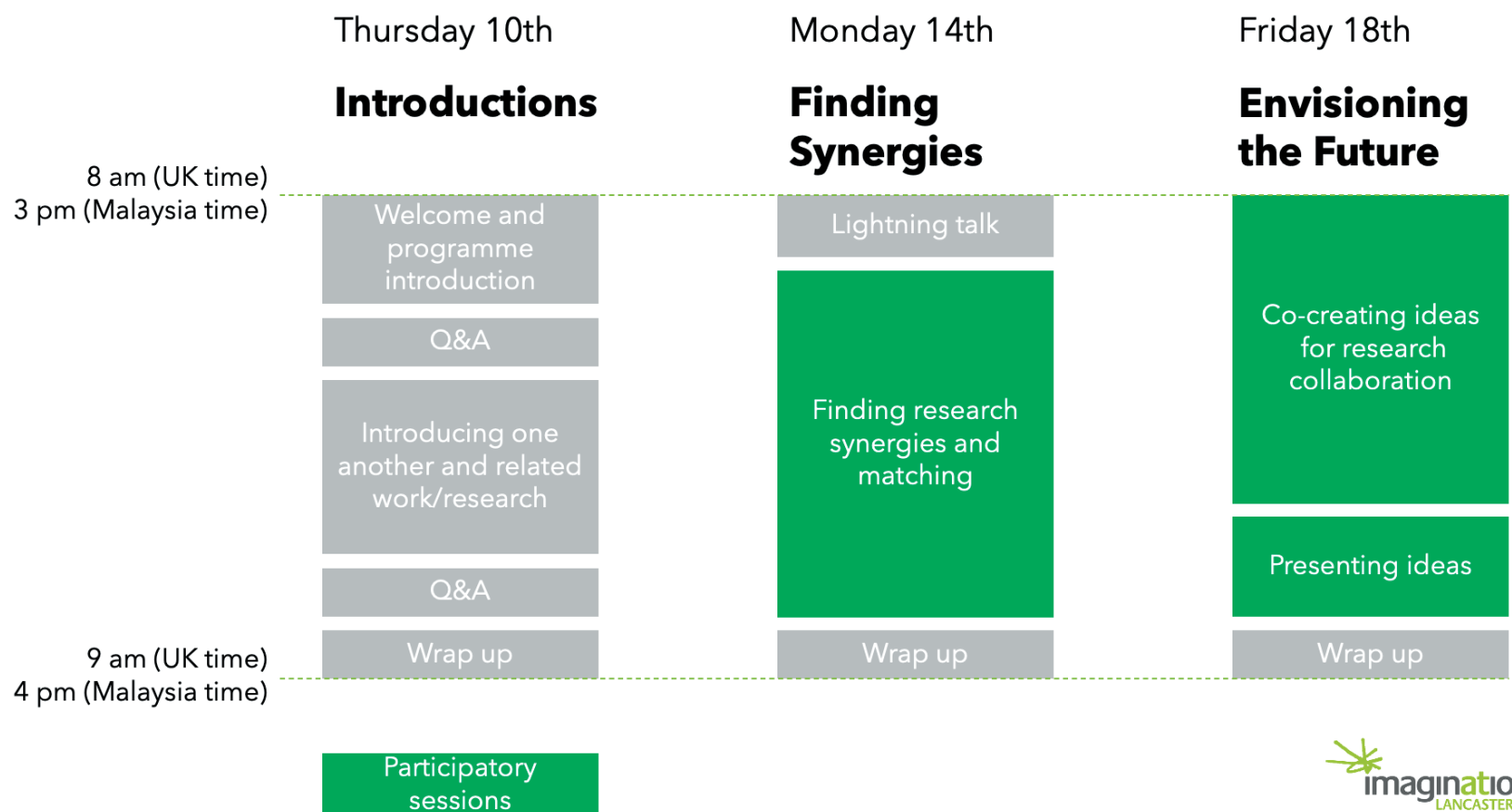
The springboard was joined by 12 participants. 5 from the Beyond Imagination (BI) project clusters, and 7 from Sunway University (SU) clusters as follows:

Name	Organisation and Cluster	Contact
Amirul Idlan Mukhtar	SU, Elasti-Cities	amirulm@sunway.edu.my
Asmadi Jusoh	SU, Elasti-Cities	asmadij@sunway.edu.my
Goh Yi Sheng	SU, Celebrate Ageing	yishengg@sunway.edu.my
Jane Gew Lai Ti	SU, Materials Smart Science & Engineering	janeg@sunway.edu.my
Leo Bourikas	LU, Home and Living	l.bourikas@lancaster.ac.uk
Louise Mullagh	LU, Policy and Population	l.mullagh@lancaster.ac.uk
Low Yeh Ching	SU, Datavolution (DataScience)	yehchingl@sunway.edu.my
Mirian Calvo	LU, Community and Public Sector	m.calvo@lancaster.ac.uk
Numan Arshid	SU, Materials Smart Science & Engineering	numana@sunway.edu.my
Sanem Bayar	LU, Factory and Workplace	s.bayar@lancaster.ac.uk
Serena Pollastri	LU, City and Urban	s.pollastri@lancaster.ac.uk
Sivakumari Supramaniam	SU, Sustainable business	sivakumaris@sunway.edu.my

Springboard programme

The activities were developed to facilitate/enable participants to get to know one another and respective research interests; to find research synergies around strategic themes for BI, Sunway and the Future Cities Research Institute (FCRI); and to identify potential future research collaborations

The Springboard programme was organised as follows:



Workshops

ABOUT ME

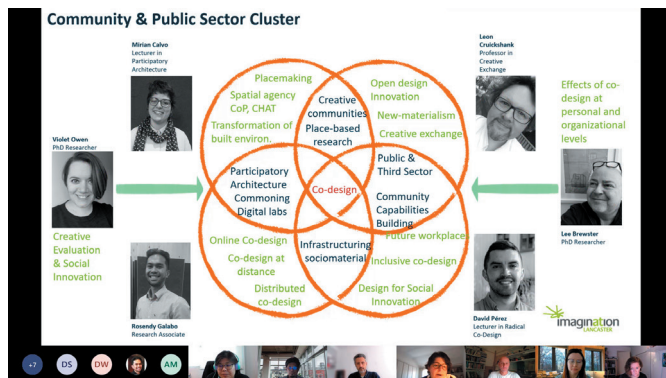
SELINA LOW YEH CHING

Department of Computing and Information Systems, School of Engineering and Technology
Computational and applied statistics

Research interests:

- Statistical modelling
- Computational statistics - Bayesian and Monte Carlo methods
- Applied statistics
- Statistics education

SUNWAY UNIVERSITY Jeffrey Cheah Foundation
Our Vision: To be a World Class University



Sustainable business

Businesses which embed concepts of sustainability in its business model or adopts a sustainability-oriented business (Lozano, 2018).

Effective sustainable business research can be achieved through appropriate balance of academic and professional/industry engagement focusing on three aspects: social equity, environmental stewardship and economic prosperity.

Hence, this cluster provides a platform from which such academic and practitioner/industry-led engagement in sustainable business-related activities can be embarked.

PROFILES

AMIRUL IDLAN MUKHTAR
Interior Architecture Design Lecturer (Sunway University Malaysia)
Bsc. Applied Science Architecture (Curtin Uni. Aus)
M.Arch Master of Architecture (Deakin Uni. Aus)

RESEARCH INTEREST:
Architecture of Culture and Preservation
Urban Planning and design

CURRENT RESEARCH:
Socio-art interaction in the city: softening the concrete jungle of Kuala Lumpur.

ASMADI JUSSOH
Lecturer (Sunway University Malaysia)
Bsc. Housing Building and Planning-Architecture (USM)
B. Architecture (USM)

RESEARCH INTEREST:
Sustainable building Materials and services, Green buildings, Passive design cooling system

CURRENT RESEARCH:
Reducing heat on pedestrian walkway and turn into comfortable active streets for tropical cities

Participants' pre-tasks

Prior to the event, participants were asked in advance to prepare three-minute presentations to introduce themselves, describe their cluster's work and research interests in a 'pecha kucha' style. They also filled out a 100-word padlet profile including information on themselves, their teaching and research background and interests. These materials were used during sessions and were made available on the MT group created for the Springboard participants.

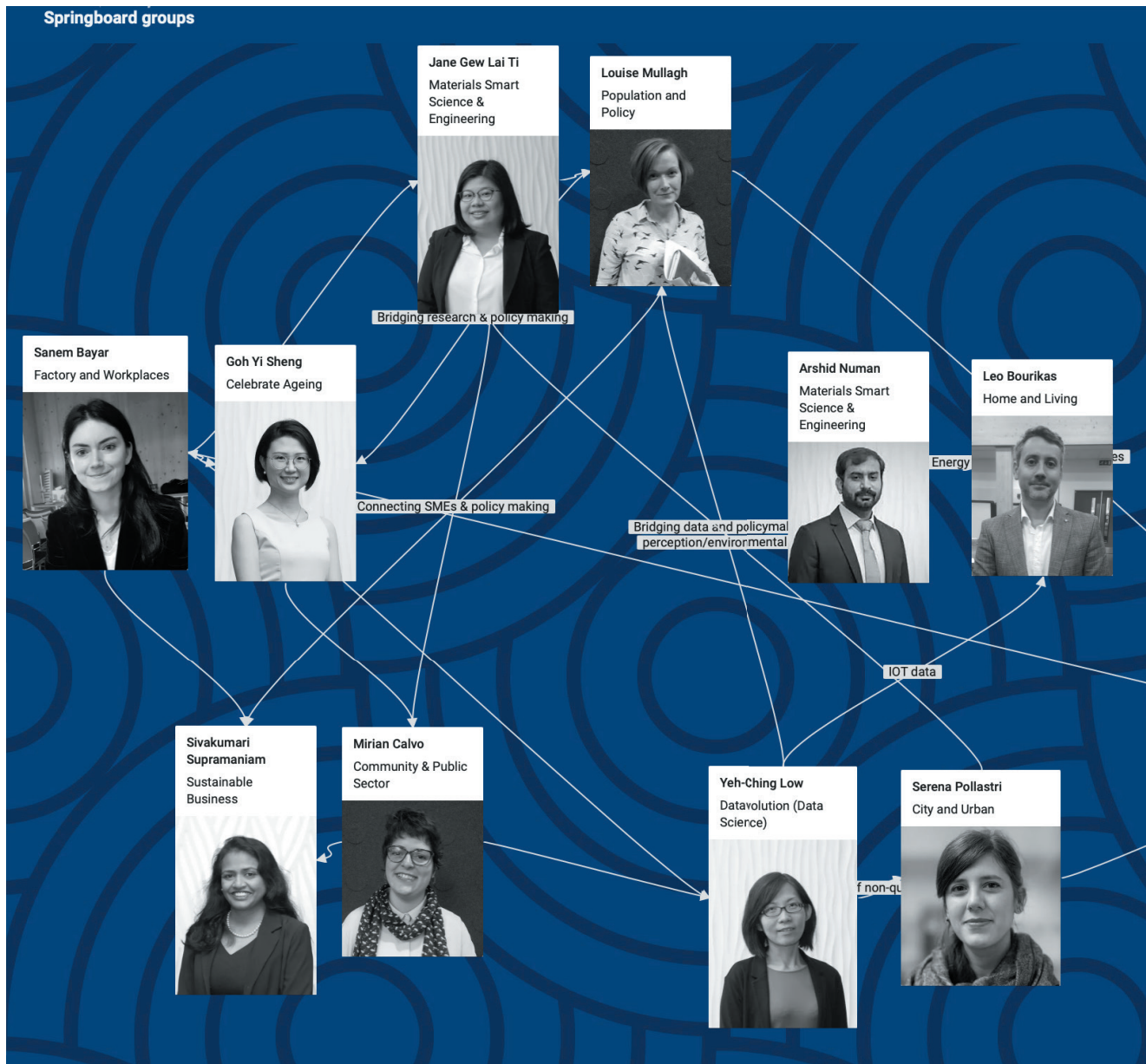
Day 1 - Introductions

The Introductions workshop began with the welcome and presentations of the Beyond Imagination project, and an overview of the Springboard programme, including its aims and objectives by Professor Nick Dunn (Lancaster University) and Professor Mahendhiran (Sunway University). This was followed by short introductions from the event organisers—Rosendy, Rupert and Mariana who further introduced the Springboard agenda and activities.

After that, the participants introduced themselves, their clusters and research interests in a 'pecha kucha' style.

Finally, the organisers outlined the activities for the second workshop.

Workshops



Day 2 – Finding Synergies

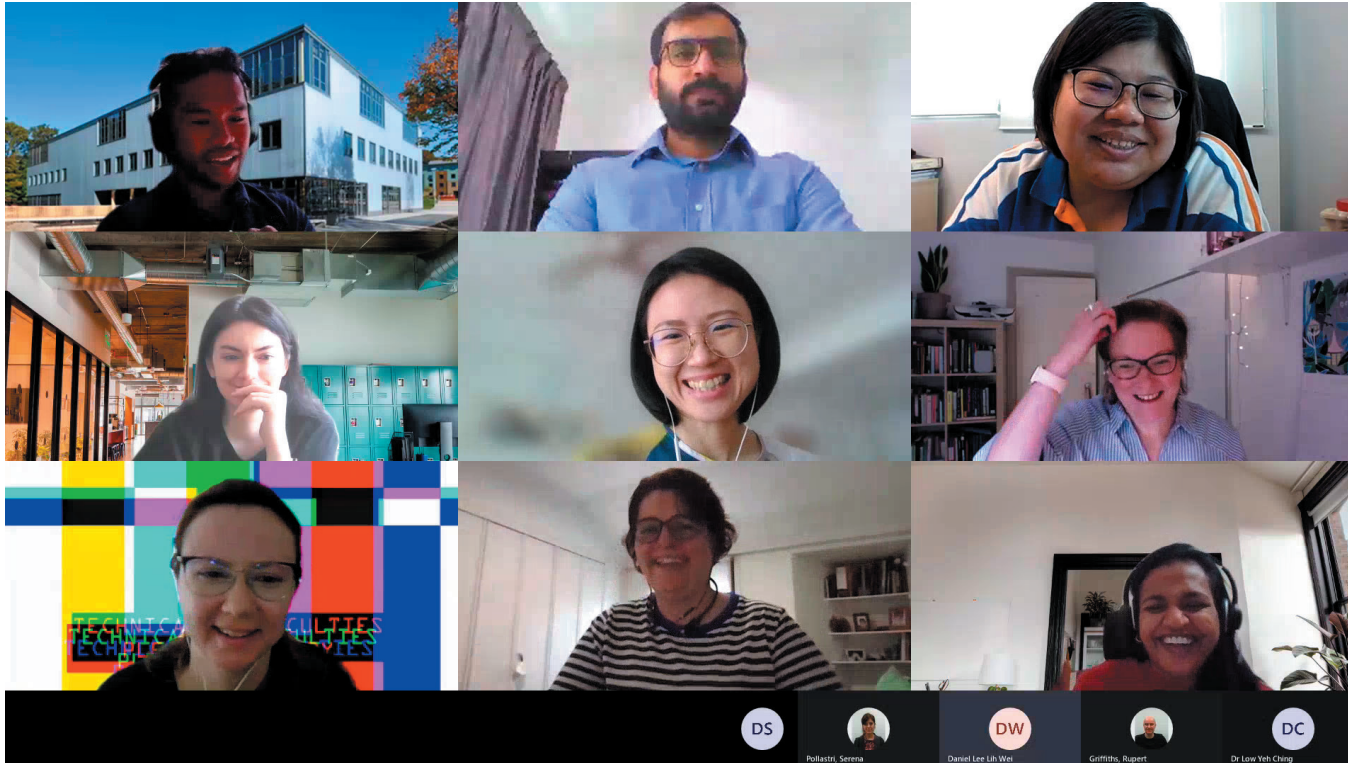
The Finding Synergies workshop began with a lightning talk from Emmanuel Tseklevs who highlighted the importance of integrating complementary expertise through collaborations and good practices to keep connections and conversations. After this, the participants had the opportunity to have one-to-one chats with each of the Springboard participants from the other institution in breakout rooms. These were necessarily short (just 3 minutes) and aimed to start revealing synergies and affinities. Following the breakout activity, participants were invited to use Padlet to make connections and share insights from the conversations they had with each other.

The aim of the Envisioning the Future workshop was to explore potential collaborations and generate ideas for joint projects or activities. Participants were assigned to groups of 2 or 3 people in breakout rooms for around 20 minutes, based upon synergies that they had expressed directly via email or that had been identified in the Padlet during the previous workshops. After the breakout sessions, they reported back with the insights and ideas that came out of their discussions for developing future collaborations between the universities. Each group had around 4 minutes to share their ideas.

6



Final considerations



At the end of the Springboard, participants were asked to share further developments that came out of these initial meetings in the Envisioning the Future Microsoft Teams group. There was great enthusiasm among participants for continuing to communicate and strengthen this partnership between both universities.

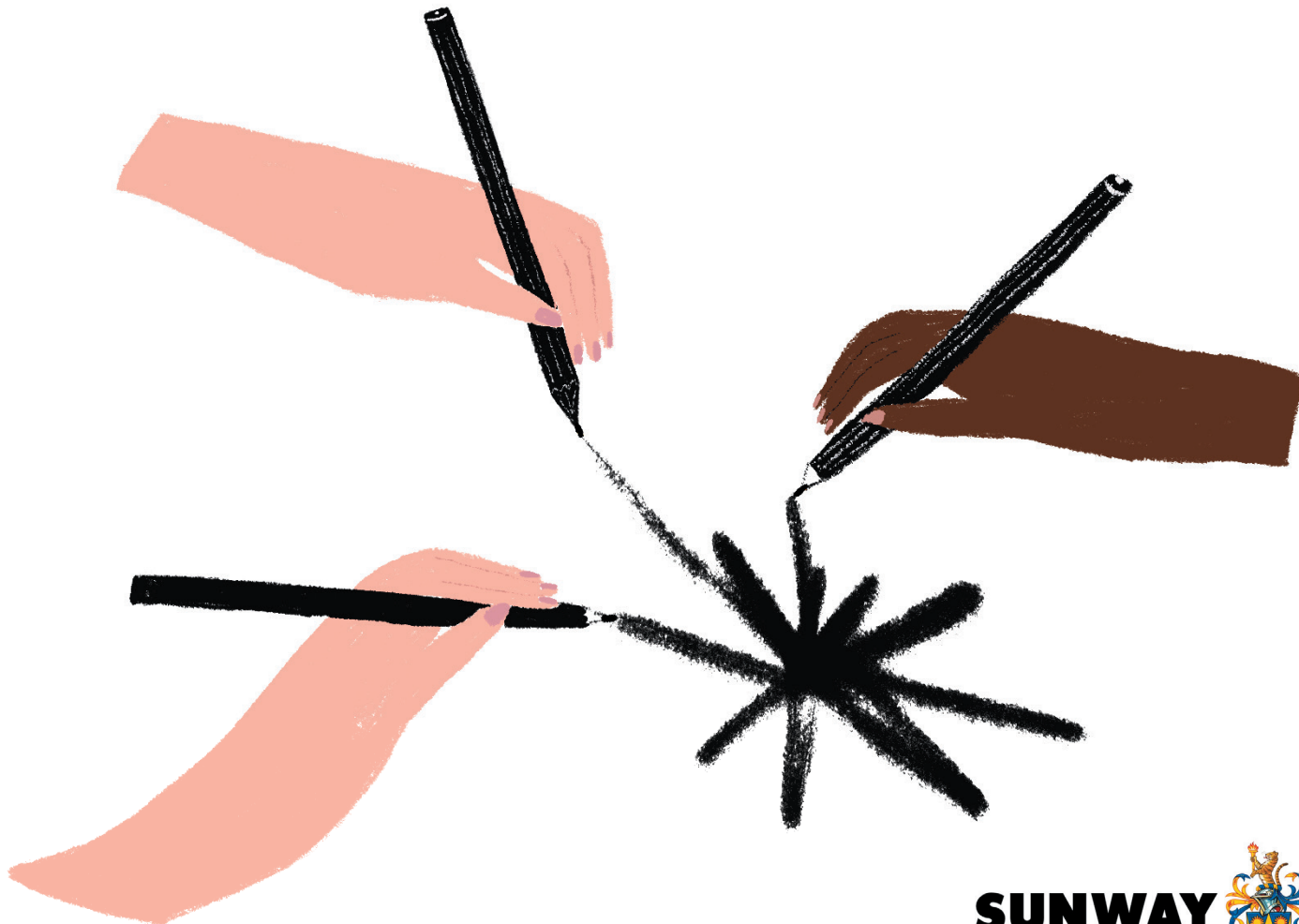
Responses from an evaluation questionnaire suggested that participants enjoyed the opportunity to know one another's research and create research collaborations, showing interest in future initiatives like the Springboard (e.g., symposiums or conferences). Although the efficiency of 3 one-hour sessions was appreciated, participants would like to have more time for introducing themselves, related work and further explore collaborations.

“The overall initiative was very good, bringing people together for collaborative research”

Participants expressed a general desire for more opportunity to get to know one another's research and develop collaborations. As one participant from Sunway University summarised: “It would be great to have a couple of hours rather than one hour for briefing and breakout sessions”

The organisers thanked everyone involved in making this Springboard a successful event.

Acknowledgements



This event would not have been possible without a strong team of organisers at both the Lancaster and Sunway institutions.

We are grateful for the Research England grant Beyond Imagination at Lancaster University, which funded this initiative. We also express our gratitude to the Faculty of Arts and Social Science at Lancaster University for their support and to the participants at Lancaster University and Sunway University who contributed to the project. We would like to extend particular thanks to Prof. Mahendhiran, Daniel Lee, Lih Wei, Emmanuel Tseklevs, Gemma Coupe, Rosie Kennedy, Andrew Abbott Academic Dean (Lancaster University at Sunway), and Prof. Nick Dunn for their support.



Appendix 1 - Bios

Sanem Bayar



Beyond Imagination - Factory and Workplaces

I am lecturer in Computational Design at Lancaster University, School of Architecture and researcher for Beyond Imagination at LICA, working in Factory & Workplaces Research Cluster. I trained as an architect and hold an MSc in Digital Architectural Design and a PhD in Building Information Modelling & Management from the University of Salford. Since 2015, I was involved in various research and consulting projects including IT Indian Heritage for AHRC, BIM for Infrastructure for UK Gov. Highways England, Automated Code Checking for Buildings for CDBB of Cambridge University. In addition, I have co-authored and acquired 5 research networking workshop grants from the British Council overseas.

My research interests center on the intersection between architecture and computer science. Currently I am working on extended realities and how these can be used as novel design tools and challenge AECO practices. I believe Digital technology is changing the way we can be creative and has always been a catalyst for new ideas in architecture, design and built environment.

Leo Bourikas



Beyond Imagination - Home and Living

I am a Lecturer in Architectural Technology and Future Living at Imagination Lancaster and Lancaster School of Architecture.

I undertake interdisciplinary research related to environmental design, energy and the built environment. The work has a people-based focus and includes user behaviour in the home and at work, alongside wider neighbourhood and city scale analysis.

My research interests are in the interactions of urban living and digital technology with occupants' behaviours and data interpretations, and how these socio-spatial interactions could enable sustainable future living with focus on energy, health and societal wellbeing.

I am currently working on net zero emissions households, sustainable technologies for house retrofits and the integration of data into everyday living for sustainable lifestyle choices.

Mirian Calvo



Beyond Imagination - Community and Public Sector

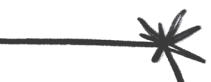
I am a Lecturer in Participatory Architecture at Lancaster School of Architecture and a member of the Community and the Public Sector cluster research at ImaginationLancaster. I have both an academic and a professional background in participatory architecture and urban planning, design innovation, design anthropology, and co-design. As part of the Beyond Imagination project I conduct research with members of the public as well as architects, social scientists, planners, public officers, geographers, etc. Currently I am the co-lead researcher of My Mainway consultancy project, and on the ESRC IAA Growing Together research project about wellbeing and micro-gardening. I am also co-investigator on the EPSRC – Connected Everything II project Embedded Intelligent Empathy in Design, on the British Academy Mapping Values, and on the British Academy Youth, Democracy, and Sustainable Citizenship research projects.

Asmadi Jusoh



Sunway University - Elasti-Cities

I am a lecturer in Art and Design courses specializing Architectural subjects. My field is mostly in building services aspects for sustainable design.



Yeh-China Low



Sunway University - Datavolution (Data Science)

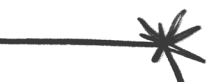
I'm a Senior Lecturer at the Department of Computing and Information Systems, School of Engineering and Technology, Sunway University. I teach Applied Statistics, Probability and Statistics and Seminar Series. I obtained my PhD in Computational and Applied Statistics from University of Malaya, Malaysia. My research interests include statistical modelling, Bayesian inference, Monte Carlo simulation and statistics education. I am also excited about research work which involves application of statistical methods - where Datavolution (research cluster in data science) is the perfect platform.

Jane Gew Lai Ti



Sunway University - Materials Smart Science & Engineering

I am a senior lecturer at the Department of Biological Sciences, Sunway University. I teach Instrumental Analysis, Pharmacology and Toxicology, Research and Publications, as well as Community Services. I am a trained Chemist and hold a PhD in Chemistry from University of Malaya, Malaysia. My research areas are colloid and surface chemistry, green chemistry and technology, and plastic pollution research. I am the founder of an NGO since 29 January 2021. I also an active community volunteer and a crowd fundraiser. I involve in community projects such as homeless and B40 community (bottom 40% household income) by providing supports and education that possibly improve their living standards.



Yi Shena Goh



Sunway University - Celebrate Ageing

I am a member of Celebrate Ageing research cluster and a senior lecturer in School of Arts at Sunway University. I am trained in industrial design and consumer sciences. My research interests include:

- 1) Design for ageing, with a focus on elder orphans (those who do not have kids) – we are currently exploring an alternative form of money such as time banking as a way to provide services to elder orphans;
- 2) Design for sustainability and social innovation – I have conducted research project on a local fishing village within which my team worked closely with villagers, village heads, and state government;
- 3) Experimental research on consumer responses to product and brand aesthetics.

Amirul Mukhtar



Sunway University - Elasti-Cities

Louise Mullagh



Beyond Imagination - Population and Policy

I am Senior Research Associate for the Population and Policy cluster. My research spans design, computing, data science and governance.

My current research explores design and its roles in the development and implementation of policy at global, national and regional levels. I am currently working on a project exploring how we might design policies for IoT and Edge computing with local government, using design fictions. Since the start of the COVID pandemic I have been gathering examples of where design has been deployed across a range of disciplines and am co-editing "Design for COVID-19".

Arshid Numan



Sunway University - Materials Smart Science & Engineering

I am senior research fellow at School of Engineering and technology (SET) Sunway University. I obtained PhD in experimental Physics from University Malaya, Malaysia. My core research focuses on development of 2D heterostructure nanomaterials for hybrid electrochemical energy storage devices for portable electronics and electrochemical sensor for the detection of heavy metal ions industrial waste water and different biomarkers in human body.



Sivakumari Supramaniam



Sunway University - Materials Smart Science & Engineering

Lecturer at the Department of Marketing. My main research interest explores how people realise the value of their everyday experiences (lived experiences). My research approach mainly qualitative, drawing on social constructionism, and relationality. Currently, I'm working on several projects related to emotions: brand hate on service processes, customer emotions during the salesperson interactions, and the psychological well-being of service providers during the pandemic. Another main area that I'm keen on working with others is how small-medium firms (SMEs) can embed sustainability practices and be part of the bigger corporation's values.

Serena Pollastri



Beyond Imagination - City and Urban

I am a visual designer interested in critical and speculative approaches to information visualisation to explore issues of more than urban, more than human futures. In my research, I develop designed tools and approaches to visualise the complex interconnections that shape what places look like and how different communities of organisms inhabit them. I do that by designing and codesigning maps, machines, and interactive toolkits with both experts in environmental issues and the public. The main aim of most of my work is to bring together and articulate multiple perspectives on the pasts, presents, and futures of place.

